

# O2RESORT

GRAND BAHAMA ISLAND

## SITE PLAN

- **Waterfront** homes: Lots 1-9
- **Garden View** homes: Lots 10, 11, 12 & 14
- The price of each individual lot is based on the location, size and accessibility of the lot
- Each with **deep water** dockage (>10 feet)
  - **Garden View** homes access their docks via the easement between lots 6 and 7

Supported by



# Marlin

## Summary

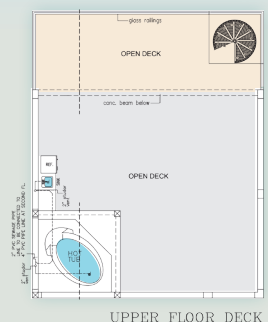
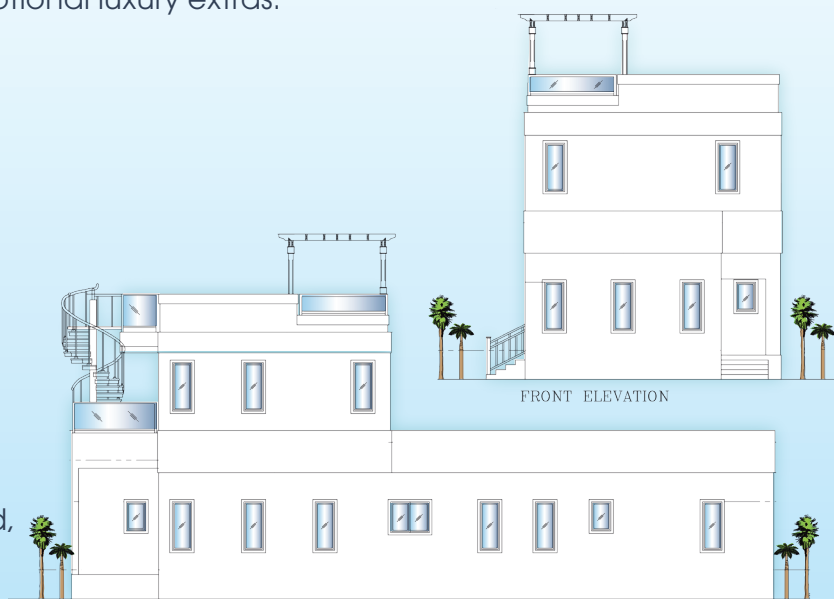
Prime position 3 bedroom, 3 bathroom single-family home with spacious living room, an infinity pool & a range of optional luxury extras.

## Features

- Waterfront
- Detached
- 3 x storey including roof terrace
- 3rd floor open deck with spiral access & hot tub
- 2,642 sq ft
- 3 bedrooms - 2 on ground, ensuite upstairs
- 3 bathrooms/toilets including en suite
- Infinity pool with lighting
- Boat dock
- Covered patio
- Optional Captain's Quarters to provide garage & additional accommodation

## Price

From \$1,575,000 USD



Jenna Issott, Executive Sales Director  
Tel: +1 (407) 782-0994  
Email: jenna@O2Bahamas.com

Douglas Galorneau, Project Manager  
Tel: +1 (321) 720-4306  
Email: doug@O2Bahamas.com

Sheldon Christopher-England, UK Sales Director  
Tel: +44 7706 375 536  
Email: sheldon@O2Bahamas.com

TheO2Resort.com