

Marlin

Prime position 3 bedroom, 3 bathroom single-family home with spacious living room, an infinity pool & a range of optional luxury extras.

Features

- Waterfront
- Detached
- 3 x storey including roof terrace
- 3rd floor open deck with spiral access & hot tub
- 2,642 sq ft
- 3 bedrooms - 2 on ground, ensuite upstairs
- 3 bathrooms/toilets including en suite
- Infinity pool with lighting
- Boat dock
- Covered patio



PROJECTED COMPLETION AUGUST 2024



USA enquiries: Jenna Issott, Executive Sales Director. Tel: (407) 782-0994. Email: jenna@o2bahamas.com

UK/EU/ROW enquiries: Sheldon Christopher-England, Executive Sales Director. Tel: +44 7706 375 536. Email: sheldon@o2bahamas.com

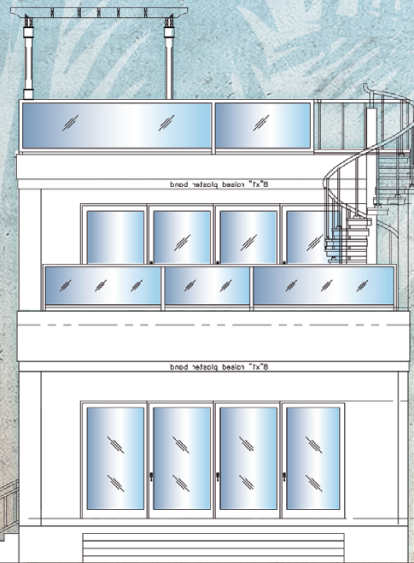
O2RESORT
GRAND BAHAMA ISLAND

theo2resort.com

Marlin



PROJECTED COMPLETION AUGUST 2024



REAR ELEVATION



SIDE ELEVATION



USA enquiries: Jenna Issott, Executive Sales Director. Tel: (407) 782-0994. Email: jenna@o2bahamas.com

UK/EU/ROW enquiries: Sheldon Christopher-England, Executive Sales Director. Tel: +44 7706 375 536. Email: sheldon@o2bahamas.com



theo2resort.com



Marlin

PROJECTED COMPLETION AUGUST 2024



USA enquiries: Jenna Issott, Executive Sales Director. Tel: (407) 782-0994. Email: jenna@o2bahamas.com

UK/EU/ROW enquiries: Sheldon Christopher-England, Executive Sales Director. Tel: +44 7706 375 536. Email: sheldon@o2bahamas.com



theo2resort.com

Marlin



PROJECTED COMPLETION AUGUST 2024



Follow development progress on our website at TheO2Resort.com



USA enquiries: Jenna Issott, Executive Sales Director. Tel: (407) 782-0994. Email: jenna@o2bahamas.com

UK/EU/ROW enquiries: Sheldon Christopher-England, Executive Sales Director. Tel: +44 7706 375 536. Email: sheldon@o2bahamas.com



theo2resort.com